



Since : 1993

# J.C. GUPTA & SONS

Fastener Super Speciality

#7/A, Sree Venkateshwara Building, Sadar Patrapa Road, Bengaluru - 560002



41478141, 9880539870



www.jcfasteners.com



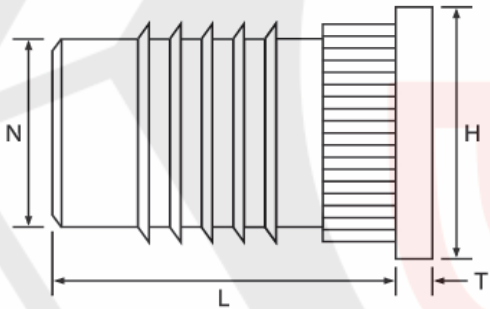
sales@jcfasteners.com

GSTIN : 29AABFJ2719C1ZO  
IEC : 00710030274

## POST MOULDING INSERT

### Press-Fix

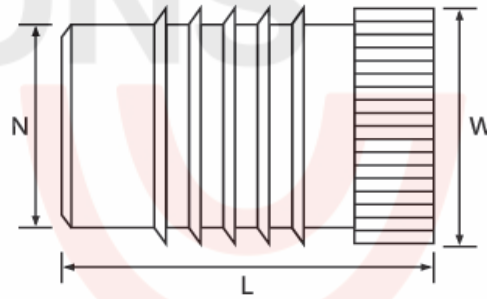
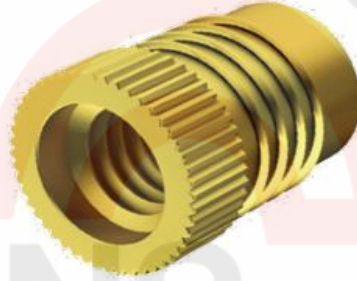
Type 1 - With Flange



## Catalogue Datasheet **D4C07-3**

### BRASS

Type 2 - Without Flange



Quote the item code given below with your order/ inquiries:

Dimensions in mm

Size→ Dimension↓	M2x0.4	M2.5x0.45	M3x0.5	M3.5x0.6	M4x0.7	M5x0.8	M6x1.0
<b>N</b>	3.10	3.90	3.90	4.70	5.50	6.30	7.90
<b>W</b>	3.70	4.50	4.50	5.30	6.10	7.00	8.60
<b>Length L</b>	4.00	4.80	4.80	6.40	7.90	9.50	12.70
<b>Flange Thickness T</b>	0.45	0.58	0.58	0.74	0.89	1.07	1.32
<b>Flange Diameter H</b>	4.80	5.50	5.50	6.40	7.10	7.90	9.50
<b>Recommended Hole Size +0.1</b>	3.20	4.00	4.00	4.80	5.60	6.40	8.00
<b>Min Wall Thickness</b>	1.60	2.00	2.00	2.40	2.80	3.20	4.00
<b>Part No Type 1</b>	D4C0702103	D4C0725103	D4C0703103	D4C0735103	D4C0704103	D4C0705103	D4C0706103
<b>Part No Type 2</b>	D4C0702203	D4C0725203	D4C0703203	D4C0735203	D4C0704203	D4C0705203	D4C0706203

Sizes in BLUE are non-preferred. Availability is limited and MOQ is higher.

Data is strictly informative