



Since : 1993

J.C. GUPTA & SONS

Fastener Super Speciality

GSTIN : 29AABFJ2719C1ZO
IEC : 00710030274

#7/A, Sree Venkateshwara Building, Sadar Patrappa Road, Bengaluru - 560002



41478141, 9880539870



www.jcfasteners.com



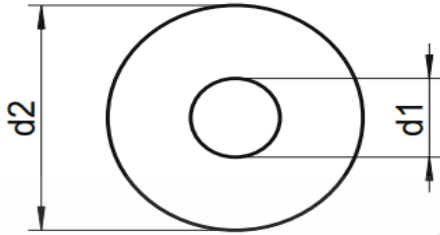
sales@jcfasteners.com

DIN 9021 LARGE WASHER



Catalogue Datasheet B4D03

Stainless Steel A2/1.4301 (SS304)



Quote the item code given below with your order/ inquiries:

Dimensions in mm

Bolt Size (Nominal Size)	Item Code	Clearance Hole Diameter d1		Outside Diameter d2		Thickness h		
		min = nominal size	max	max = nominal size	min	Nom	max	min
**M1.6 (A1.7)	B4D0310605	1.70	1.84	5.00	4.64	0.50	0.60	0.40
**M1.6 (A1.7)	B4D0310606	1.70	1.84	6.00	5.64	0.50	0.60	0.40
**M2 (A2.2)	B4D0302505	2.20	2.34	5.50	5.14	0.50	0.60	0.40
*M2 (A2.2)	B4D0302006	2.20	2.34	6.00	5.64	0.80	0.90	0.70
**M2 (A2.2)	B4D0302007	2.20	2.34	7.00	6.64	0.50	0.60	0.40
**M2.5 (A2.7)	B4D0325107	2.70	2.84	7.00	6.64	0.50	0.60	0.40
M2.5 (A2.7)	B4D0320508	2.70	2.84	8.00	7.64	0.80	0.90	0.70
**M2.5 (A2.7)	B4D0325110	2.70	2.84	10.00	9.57	0.50	0.60	0.40
**M3 (A3.2)	B4D0303008	3.20	3.38	8.00	7.64	0.80	0.90	0.70
M3 (A3.2)	B4D0303009	3.20	3.38	9.00	8.64	0.80	0.90	0.70
**M3 (A3.2)	B4D0303012	3.20	3.38	12.00	11.57	0.80	0.90	0.70
**M3 (A3.2)	B4D0303014	3.20	3.38	14.00	13.57	0.80	0.90	0.70
M3.5 (A3.7)	B4D0330511	3.70	3.88	11.00	10.57	0.80	0.90	0.70
**M4 (4.3)	B4D0304110	4.30	4.48	10.00	9.57	0.80	0.90	0.70
M4 (4.3)	B4D0304012	4.30	4.48	12.00	11.57	1.00	1.10	0.90
**M4 (4.3)	B4D0304114	4.30	4.48	14.00	13.57	0.80	0.90	0.70
**M4 (4.3)	B4D0304116	4.30	4.48	16.00	15.57	0.80	0.90	0.70
**M5 (A5.3)	B4D0305112	5.30	5.48	12.00	11.57	1.00	1.20	0.80
*M5 (A5.3)	B4D0305012	5.30	5.48	12.00	11.57	1.20	1.40	1.00
M5 (A5.3)	B4D0305015	5.30	5.48	15.00	14.57	1.20	1.40	1.00
**M5 (A5.3)	B4D0305116	5.30	5.48	16.00	15.57	1.00	1.20	0.80
**M5 (A5.3)	B4D0305120	5.30	5.48	20.00	19.48	1.00	1.20	0.80
**M6 (A6.4)	B4D0306114	6.40	6.62	14.00	13.57	1.20	1.40	1.00
*M6 (A6.4)	B4D0306116	6.40	6.62	16.00	15.57	1.20	1.40	1.00
*M6 (A6.4)	B4D0306016	6.40	6.62	16.00	15.57	1.60	1.80	1.40
**M6 (A6.4)	B4D0306118	6.40	6.62	18.00	17.57	1.20	1.40	1.00
M6 (A6.4)	B4D0306018	6.40	6.62	18.00	17.57	1.60	1.80	1.40
**M6 (A6.4)	B4D0306124	6.40	6.62	24.00	23.48	1.20	1.40	1.00
*M6 (A6.4)	B4D0306025	6.40	6.62	25.00	24.48	1.60	1.80	1.40
**M7 (A7.4)	B4D0307116	7.40	7.62	16.00	15.57	1.50	1.70	1.30
**M7 (A7.4)	B4D0307120	7.40	7.62	20.00	19.48	1.50	1.70	1.30
M7 (A7.4)	B4D0307022	7.40	7.62	22.00	23.48	2.00	2.20	1.80



Since : 1993

J.C. GUPTA & SONS

Fastener Super Speciality

GSTIN : 29AABFJ2719C1ZO
IEC : 00710030274

#7/A, Sree Venkateshwara Building, Sadar Patrappe Road, Bengaluru - 560002



41478141, 9880539870



www.jcfasteners.com



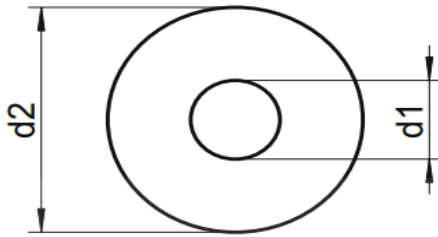
sales@jcfasteners.com

DIN 9021 LARGE WASHER



Catalogue Datasheet B4D03

Stainless Steel A2/1.4301 (SS304)



Quote the item code given below with your order/ inquiries:

Dimensions in mm

Bolt Size (Nominal Size)	Item Code	Clearance Hole Diameter d1		Outside Diameter d2		Thickness h		
		min = nominal size	max	max = nominal size	min	Nom	max	min
**M7 (A7.4)	B4D0307127	7.40	7.62	27.00	26.48	1.50	1.70	1.30
**M8 (A8.4)	B4D0308118	8.40	8.62	18.00	17.57	1.50	1.70	1.30
**M8 (A8.4)	B4D0308122	8.40	8.62	22.00	21.48	1.50	1.70	1.30
M8 (A8.4)	B4D0308024	8.40	8.62	24.00	23.48	2.00	2.20	1.80
**M8 (A8.4)	B4D0308130	8.40	8.62	30.00	29.48	1.50	1.70	1.30
**M10 (A10.5)	B4D0310122	10.50	10.77	22.00	21.48	2.00	2.20	1.80
*M10 (A10.5)	B4D0310025	10.50	10.77	25.00	24.48	2.50	2.70	2.30
**M10 (A10.5)	B4D0310127	10.50	10.77	27.00	26.48	2.00	2.20	1.80
M10 (A10.5)	B4D0310030	10.50	10.77	30.00	29.48	2.50	2.70	2.30
**M10 (A10.5)	B4D0310136	10.50	10.77	36.00	35.48	2.00	2.20	1.80
**M12 (A13)	B4D0312127	13.00	13.27	27.00	26.48	2.50	2.70	2.30
*M12 (A13)	B4D0312030	13.00	13.27	30.00	29.48	3.00	3.30	2.70
**M12 (A13)	B4D0312132	13.00	13.27	32.00	31.48	2.50	2.70	2.30
M12 (A13)	B4D0312037	13.00	13.27	37.00	36.38	3.00	3.30	2.70
**M12 (A13)	B4D0312140	13.00	13.27	40.00	39.38	2.50	2.70	2.30
*M12 (A13)	B4D0312050	13.00	13.27	50.00	49.38	3.00	3.30	2.70
**M14 (A15)	B4D0314130	15.00	15.27	30.00	29.48	2.50	2.70	2.30
**M14 (A15)	B4D0314136	15.00	15.27	36.00	35.48	2.50	2.70	2.30
M14 (A15)	B4D0314044	15.00	15.27	44.00	43.38	3.00	3.30	2.70
**M14 (A15)	B4D0314145	15.00	15.27	45.00	45.38	2.50	2.70	2.30
**M16 (A17)	B4D0316032	17.00	17.27	32.00	31.48	3.00	3.30	2.70
**M16 (A17)	B4D0316040	17.00	17.27	40.00	39.38	3.00	3.30	2.70
M16 (A17)	B4D0316050	17.00	17.27	50.00	49.38	3.00	3.30	2.70
M18 (A20)	B4D0318056	20.00	20.52	56.00	54.10	4.00	4.60	3.40
M20 (A22)	B4D0320060	22.00	22.52	60.00	58.10	4.00	4.60	3.40
M24 (A26)	B4D0324072	26.00	26.84	72.00	70.10	5.00	6.00	4.00
M30 (A33)	B4D0330092	33.00	34.00	92.00	89.80	6.00	7.00	5.00
M36 (A39)	B4D0336110	39.00	40.00	110.00	107.80	8.00	9.20	8.00

Sizes in BLUE are non-preferred. Availability is limited and MOQ higher.

Data is strictly informative

* marked sizes have alternate dimensions not as per standard ** marked sizes are as per NF-E25-513/514

Note: All Austenitic Stainless Steel Fasteners may exhibit some magnetic properties due to the manufacturing process.

Refer: ISO 3506-2 Annex F