

BaerCoil® Taps



BaerCoil® Taps with pilot nose

HSSG	EG
	STI

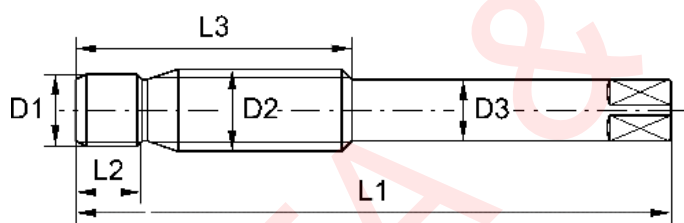
works standard



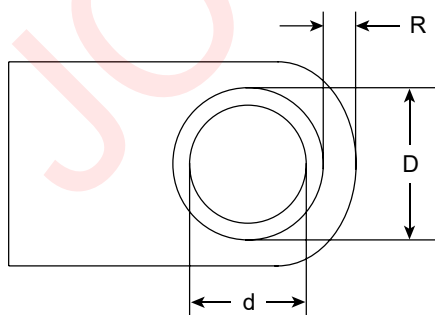
M	D1	D2	D3	L1	L2			No.	Part No
M 6 x 1,0	6,0	7,30	8,0	70	8	28	6,3	B3630	L2F4406001
M 8 x 1,25	8,0	9,62	8,0	75	8	32	6,3	B3631	L2F4408001
M 10 x 1,0*	10,0	11,30	8,0	73	8	32	6,3	B3632	L2F4410101
M 10 x 1,5	10,0	11,95	9,0	80	9	37	7,1	B3633	L2F4410001
M 12 x 1,25*	12,0	13,62	11,0	81	8	33	9,0	B3634	L2F4412201
M 14 x 1,25*	14,0	15,57	12,5	90	8	48	10,0	B3635	L2F4414201
M 18 x 1,5*	18,0	19,95	16,0	116	10	47	12,5	B3636	L2F4418201

* dimensions for spark plug threads

- for tapping internal threads in damaged metric threads
- no pre-drilling needed
- mainly used for repairing spark plug thread
- for through holes and very deep blind holes



Minimum wall thickness



d = nominal diameter
D = outside diameter of holding thread
R = residual wall thickness

$$R \text{ (min)} = 0,375 \times D$$

The minimum wall thickness mainly depends on individual operating data.

These define material strength and length of thread engagement. The indicated guide value formulas apply to aluminium, cast and wrought alloys and the length of thread engagement of BaerCoil Wire Thread Insert of 1.5 D.