

# Machine Taps - Form B for through holes

## UNF Unified fine thread ANSI B1.1

### Machine Tap for general use



through holes up to 4 x D  
Chip removal (like picture)  
Form B with spiral point



material: HSSE 2B to 900 N/mm² 27,1 HRC



4-5 threads outside cooling and lubrication

### Machine Tap for stainless steels



through holes up to 2.5 x D  
Chip removal (like picture)  
Form B with spiral point

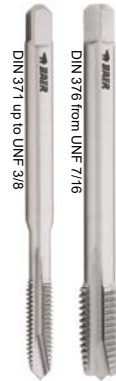
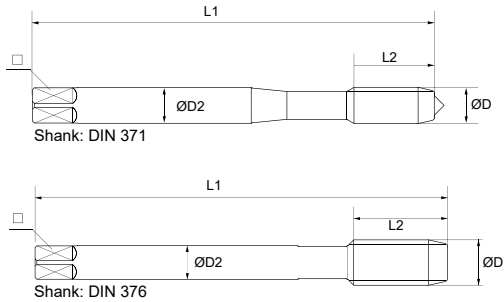


material: HSSE-TIAIN 2B to 1300 N/mm² 41 HRC



4-5 threads outside cooling and lubrication

Tap for machine use in through hole.  
The spiral point pushes the chips ahead.



## UNF

	D1	D2	L1	L2	□		No.	€	No.	€
UNF No 3 x 56	2,52	2,8	50	9	2,1	2,10			150405001	47,78
UNF No 4 x 48	2,85	3,5	50	10	2,7	2,40	150401001	9,58	150405002	46,75
UNF No 5 x 44	3,18	3,5	56	11	2,7	2,70	150401002	9,58	150405003	49,22
UNF No 6 x 40	3,51	4,0	56	12	3,0	3,00	150401003	9,58	150405004	49,22
UNF No 8 x 36	4,17	4,5	63	13	3,4	3,50	150401004	9,58	150405005	50,26
UNF No 10 x 32	4,83	6,0	70	15	4,9	4,10	150401005	9,58	150405006	56,88
UNF No 12 x 28	5,49	6,0	70	16	4,9	4,70	150401006	9,58	150405007	50,07
UNF 1/4 x 28	6,35	7,0	80	17	5,5	5,50	150401007	9,58	150405008	50,07
UNF 5/16 x 24	7,94	8,0	90	17	6,2	6,90	150401008	12,14	150405009	54,30
UNF 3/8 x 24	9,53	9,0	100	18	7,0	8,50	150401009	13,58	150405010	62,57
UNF 7/16 x 20	11,11	8,0	100	22	6,2	9,90	150401010	16,15	150405011	75,00
UNF 1/2 x 20	12,70	9,0	100	22	7,0	11,50	150401011	16,15	150405012	75,00
UNF 9/16 x 18	14,29	11,0	100	22	9,0	12,90	150401012	24,62	150405013	83,63
UNF 5/8 x 18	15,88	12,0	100	22	9,0	14,50	150401013	24,62	150405014	104,94
UNF 3/4 x 16	19,05	14,0	110	25	11,0	17,50	150401014	47,89	150405015	148,64
UNF 7/8 x 14	22,23	18,0	140	26	14,5	20,25	150401015	57,92	150405016	170,80
UNF 1" x 12	25,40	20,0	150	28	16,0	23,25	150401016	65,71	150405017	217,79
UNF 1" x 14	25,40	20,0	150	28	16,0	23,30	150401017	65,71		
UNF 1.1/4 x 12	31,75	22,0	150	30	18,0	29,50	150401018	91,88		
UNF 1.1/2 x 12	38,10	32,0	170	33	24,0	36,00	150401019	191,56		