

Expandet Super Frame Fixing

Expandet Super Frame Fixing is suitable for fixing door and window frames in solid brick and concrete.



ADVANTAGES

- Through fixing.
- No thermal bridge.

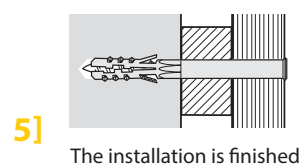
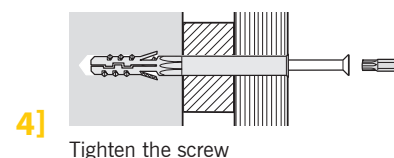
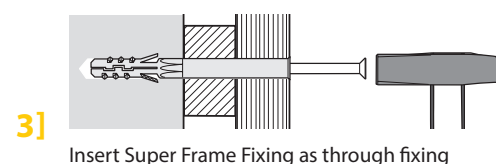
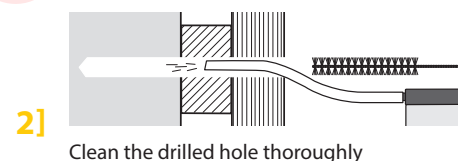
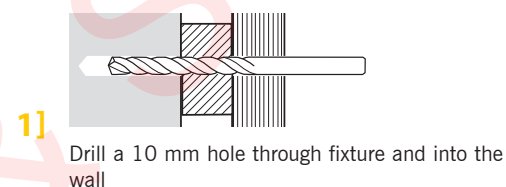
ACCESSORIES

Self-adhesive FastCap covercaps.

Covercaps.



INSTALLATION:



Type	Load capacities			
DIAMETER	Beton 25 N/mm ² ▼		Solid bricks 15 N/mm ² ♦	
	Recommended Tension load N _{Rd}	Recommended Shear load V _{Rd}	Recommended Tension load N _{Rd}	Recommended Shear load V _{Rd}
10	2,2	2,7	1,0	1,5

▼ Design loads are valid for a single anchor in concrete ≥ C 20/25 not influenced by edge distance and/or spacing. Partial safety factor for material (γ_m) is included. Partial safety factor for actions (γ_f) must be applied according to national building code..

♦ Design loads are valid for a single anchor in solid brick with a compressive strength ≥ 15 N/mm² and joints completely filled with mortar not influenced by edge distance and/or spacing. Partial safety factor for material (γ_m) is included. Partial safety factor for actions (γ_f) must be applied according to national building code.

If no guidance for γ_f exists Expandet recommend a partial safety factor for actions of minimum 1,5.
1 kN ≈ 100 kg.

Combined resistance shall be verified if both tension and shear actions are applied:

$$\left(\frac{N_{Sd}}{N_{Rd}} \right) + \left(\frac{V_{Sd}}{V_{Rd}} \right) \leq 1,2$$

Expandet Super Frame Fixing with zinc-plated screw



EXPANDET SUPER FRAME FIXING with zinc-plated screw, TX 40 (Technical Sheet No. 302)

TYPE DIMENSION		DRILL DIA. MM	DRILL DEPTH MM	THICKNESS OF FIXTURE (MAX.) MM	EXPANDET ARTICLE NO.	PCS. PER BOX	Part No	EAN 13 PER BOX
10 x 80	*	10	90	30	581080	50	N5L1610080	5708620056302
10 x 100	*	10	110	50	581100	50	N5L1610100	5708620056319
10 x 115	*	10	125	65	581115	50	N5L1610115	5708620056326
10 x 135	*	10	145	85	581135	50	N5L1610135	5708620056333
10 x 160	*	10	170	110	581160	50	N5L1610160	5708620056340
10 x 200		10	210	150	581200	50	N5L1610200	5708620058085
10 x 240		10	250	190	581240	50	N5L1610240	5708620058092

* Replaced by Expandet MFA, 2016