

Machine Taps - Form C (with spiral flutes) for blind holes

M Metric coarse thread
ISO DIN 13

Machine Tap
UNITAP for universal use

Machine Tap
for general use

Machine Tap
for general use
Left-hand thread



blind holes up to 3 x D
Chip removal (like picture)
Form C 40° spiral flute



material: HSSE-TiAlN
ISO2/6H
to 1200 N/mm²
38 HRC



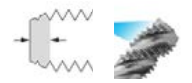
2-3 threads
outside cooling and lubrication



blind holes up to 3 x D
Chip removal (like picture)
Form C 35° spiral flute



material: HSSE
ISO2/6H
to 900 N/mm²
27.1 HRC



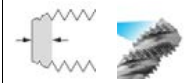
2-3 threads
outside cooling and lubrication



blind holes up to 3 x D
Chip removal (like picture)
Form C 35° left spir. flute

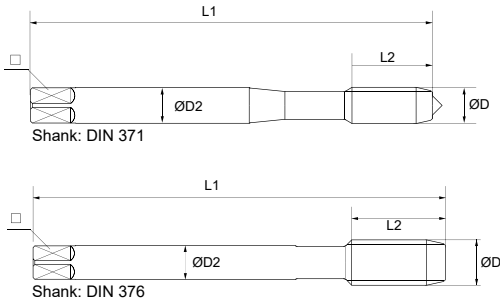


material: HSSE
ISO2/6H
to 900 N/mm²
27.1 HRC



2-3 threads
outside cooling and lubrication

Tap for machine use in blind holes.
The fast spiral flutes provide good chip removal from the blind hole.



M	D1	D2	L1	L2	□		No.	€	No.	€	No.	€
DIN 371												
M 2 x 0,4	2,0	2,8	45	6	2,1	1,60	110603001	26,24	110601001	9,09		
M 2,2 x 0,45	2,2	2,8	45	6	2,1	1,75	110603002	29,07				
M 2,5 x 0,45	2,5	2,8	50	6	2,1	2,05	110603003	22,09	110601002	9,09		
M 3 x 0,5	3,0	3,5	56	6	2,7	2,50	110603004	17,33	110601003	7,86	110602001	14,37
M 3,5 x 0,6	3,5	4,0	56	13	3,0	2,90	110603005	20,16	110601004	8,64		
M 4 x 0,7	4,0	4,5	63	7	3,4	3,30	110603006	17,64	110601005	7,86	110602002	14,37
M 5 x 0,8	5,0	6,0	70	8	4,9	4,20	110603007	17,85	110601006	8,65	110602003	15,37
M 6 x 1,0	6,0	6,0	80	10	4,9	5,00	110603008	18,63	110601007	8,65	110602004	15,37
M 7 x 1,0	7,0	7,0	80	19	5,5	6,00			110601008	11,97		
M 8 x 1,25	8,0	8,0	90	14	6,2	6,80	110603009	21,95	110601009	10,42	110602005	18,38
M 10 x 1,5	10,0	10,0	100	16	8,0	8,50	110603010	26,57	110601010	13,08	110602006	20,94
DIN 376												
M 3 x 0,5	3,0	2,2	56	6	-	2,50			110601011	8,64	110602007	14,37
M 4 x 0,7	4,0	2,8	63	7	2,1	3,30			110601012	8,64	110602008	14,37
M 5 x 0,8	5,0	3,5	70	8	2,7	4,20			110601013	9,08	110602009	15,37
M 6 x 1,0	6,0	4,5	80	10	3,4	5,00			110601014	9,08	110602010	15,37
M 8 x 1,25	8,0	6,0	90	14	4,9	6,80			110601015	11,08	110602011	18,38
M 10 x 1,5	10,0	7,0	100	16	5,5	8,50			110601016	13,30	110602012	20,94
M 12 x 1,75	12,0	9,0	110	18	7,0	10,20	110603011	33,60	110601017	15,51	110602013	23,84
M 14 x 2,0	14,0	11,0	110	20	9,0	12,00	110603012	43,00	110601018	19,94	110602014	30,40
M 16 x 2,0	16,0	12,0	110	22	9,0	14,00	110603013	54,12	110601019	22,16	110602015	35,08
M 18 x 2,5	18,0	14,0	125	25	11,0	15,50	110603014	73,59	110601020	32,68	110602016	46,78
M 20 x 2,5	20,0	16,0	140	25	12,0	17,50	110603015	88,22	110601021	43,22	110602017	66,83
M 22 x 2,5	22,0	18,0	140	27	14,5	19,50	110603016	111,49	110601022	50,97	110602018	74,85
M 24 x 3,0	24,0	18,0	160	30	14,5	21,00	110603017	117,81	110601023	53,19	110602019	77,19
M 27 x 3,0	27,0	20,0	160	30	16,0	24,00	110603018	188,87	110601024	86,43	110602020	132,54
M 30 x 3,5	30,0	22,0	180	35	18,0	26,50	110603019	230,55	110601025	90,86	110602021	136,99
M 33 x 3,5	33,0	25,0	180	35	20,0	29,50			110601026	129,65	110602022	190,46
M 36 x 4,0	36,0	28,0	200	40	22,0	32,00			110601027	205,00	110602023	320,76
M 39 x 4,0	39,0	32,0	200	40	24,0	35,00			110601028	260,42	110602024	394,28
M 42 x 4,5	42,0	32,0	200	45	24,0	37,50			110601029	310,28	110602025	459,99
M 45 x 4,5	45,0	36,0	220	45	29,0	40,50			110601030	349,07	110602026	522,36
M 48 x 5,0	48,0	36,0	250	50	29,0	43,00			110601031	382,30	110602027	570,22
M 52 x 5,0	52,0	40,0	250	50	32,0	47,00			110601032	454,33	110602028	666,04